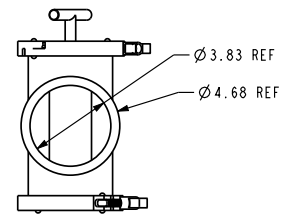
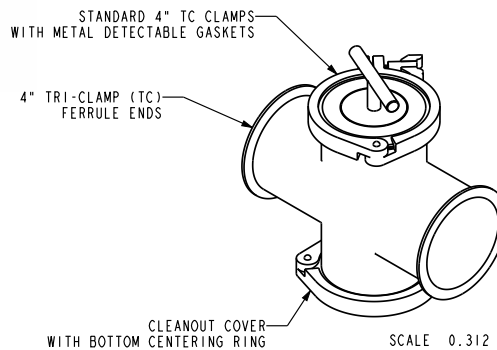
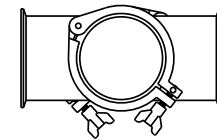
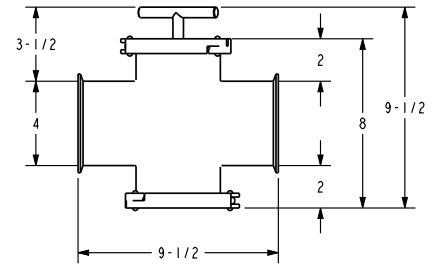
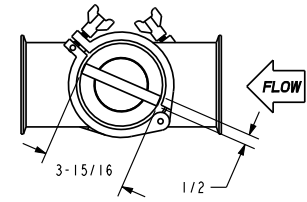
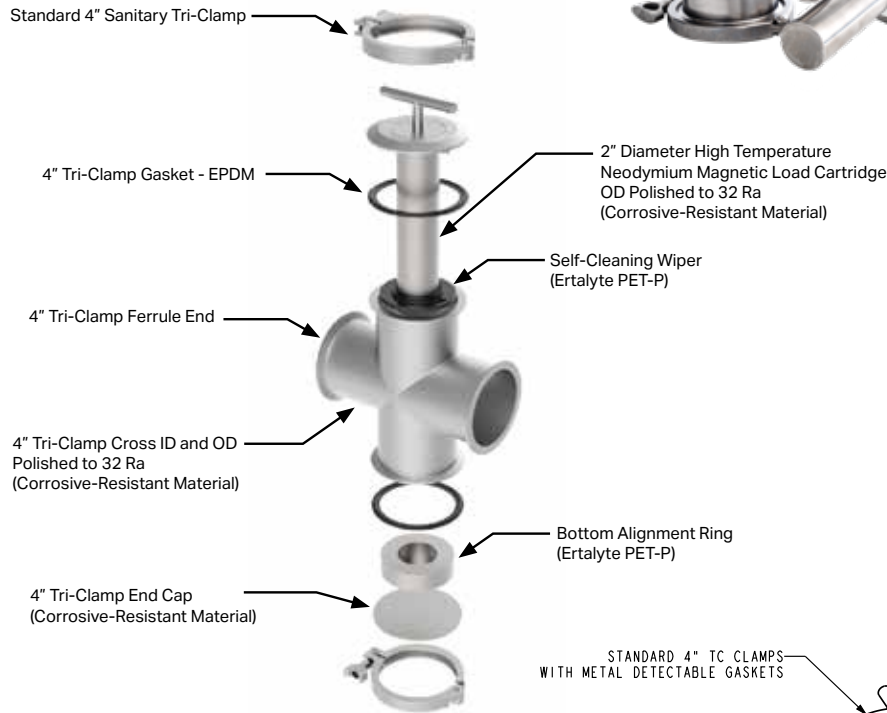


# CR-Magnetic Liquid Trap

Corrosive-Resistant for Processing of Acidic Foods



## Features:

- Manufactured of Corrosive-Resistant Material.
  - This revolutionary material has a much higher resistance to chloride pitting, crevice corrosion, and stress cracking corrosion.
- Standard Tri-Clamp clamped housing body versus V-band clamp.
  - Standard closing system.
  - Still maintains the same pressure ratings as our standard units.
- 2" diameter magnetic load with 45SH Neodymium magnets.
  - Thicker wall than 1" cartridges to last longer in service.
- Self-Cleaning is offered as standard.
  - Ertalyte PET-P wiper ring, similar to our HFS wipers used to clean magnetic load.
- 4" Tri-Clamp clamps used for both the magnetic load and the bottom of the housing.
  - Quicker cleaning of magnetic cartridge.
  - Standard gaskets are less expensive and less likely to be damaged.
  - Quick bottom of housing opening allows for better cleaning.