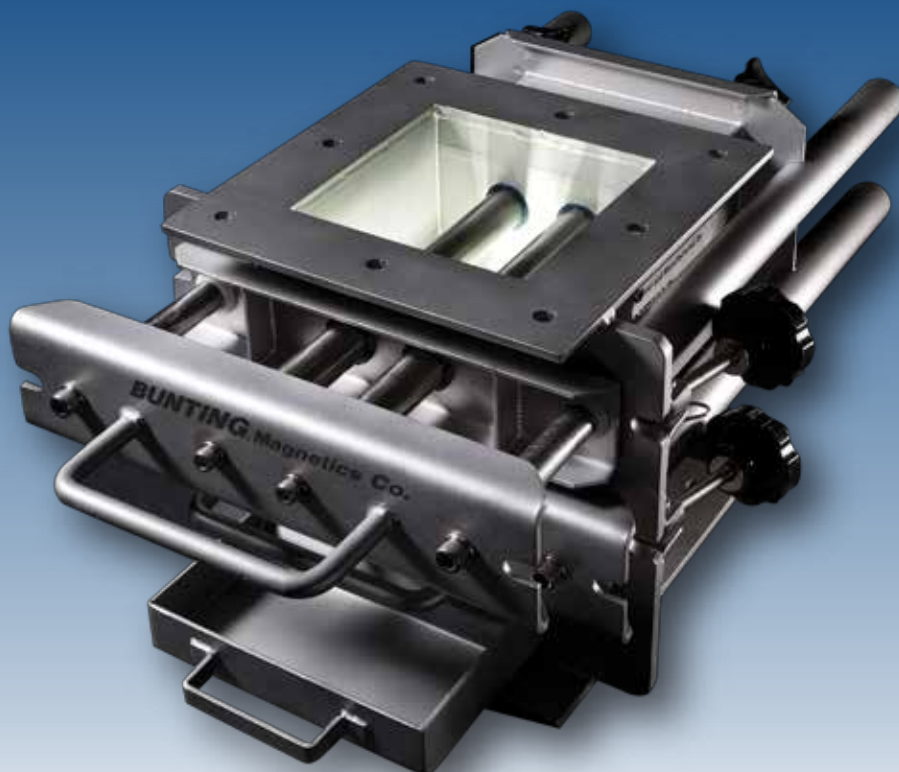


 **BUNTING**® Magnetics Co.

Only The BEST,  
and We'll Prove It!

# No Metal. No Doubt.



## **THE NUHI™ Neodymium Ultra High Intensity Cartridge Magnet**

**The Strongest Magnetic Cartridge  
In The Industry.  
No Ifs, Ands or Metal.**



 **BUNTING**®  
Magnetics Co.

Designed & Manufactured In The USA

800•835•2526

[buntingmagnetics.com](http://buntingmagnetics.com)



**Introducing The Bunting® Neodymium Ultra High Intensity Magnet.**  
Think Of It As Additional Food Insurance.



**The NUHI™ Cartridge Magnet** amplifies the performance of Bunting® Magnetics Separation Equipment by incorporating a cartridge with an even stronger magnetic load while maintaining our equally strong reputation for durability and quality. Now, dry food, feed, spice and grain processors can have added confidence that their product will be free of tramp metal and the finest of fines. Customers and brands are protected.

### **STRENGTH IN NUMBERS**

**Pull Strength\* (1/2" ball on surface):** 17% stronger than our previous cartridge.

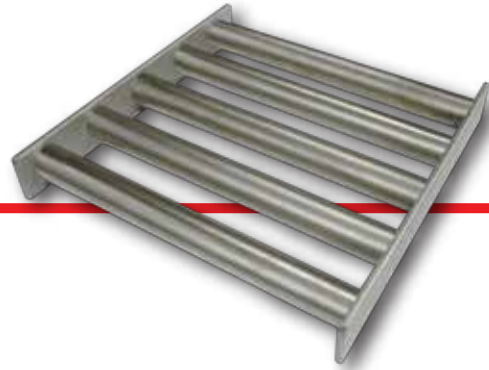
**Pull Strength\* (1/4" ball on surface):** 14% stronger than our previous cartridge.

**Reach Out** 24% more reach out than our previous cartridge.

*\*based on the average differences with eight pull tests in a room temperature environment.*

# INSIDE THE NUHI™

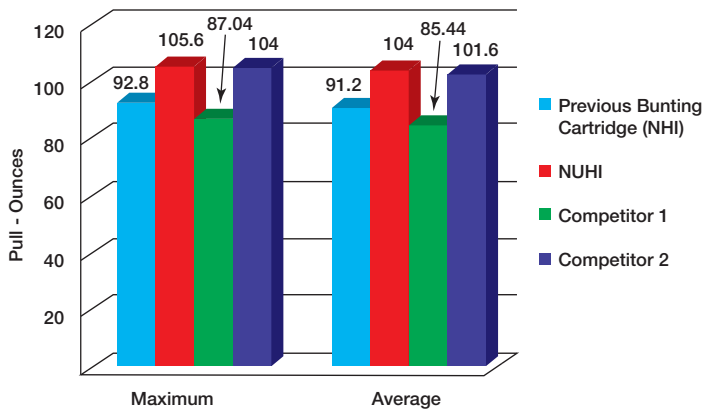
- 1" cartridge diameter
- Higher holding values
- Most powerful cartridge in the industry
- Better reach outs
- Maximized surface gauss
- Standard 316 Stainless Steel for high intensity loads
- Better separation of fine tramp and ferrous fines
- Standard on HF Drawer Filters and Grates (food grade or better)



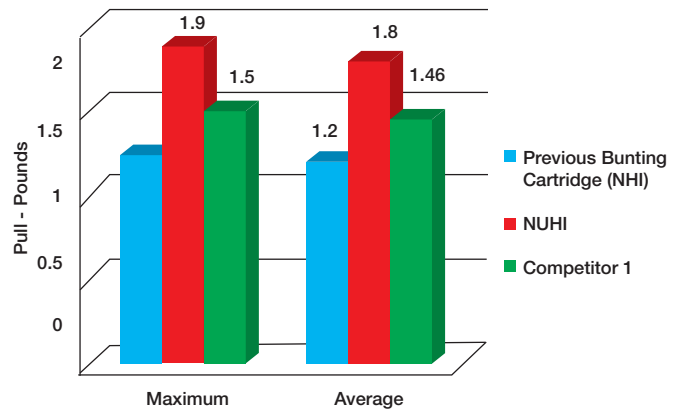
## THE NUHI™ Neodymium Ultra High Intensity Cartridge Magnet

The Strongest Magnetic Cartridge In The Industry. No Ifs, Ands or Metal.

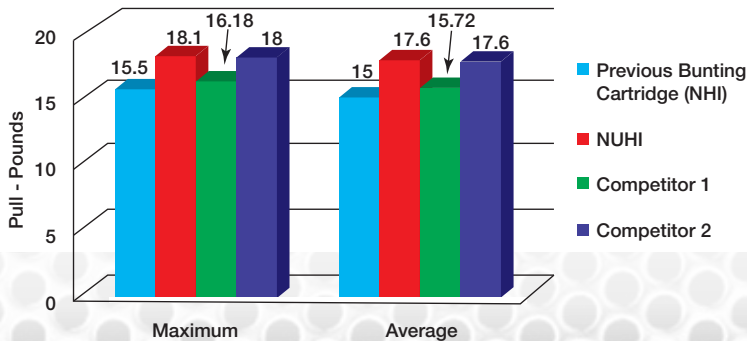
1/4" Diameter Ball on Surface



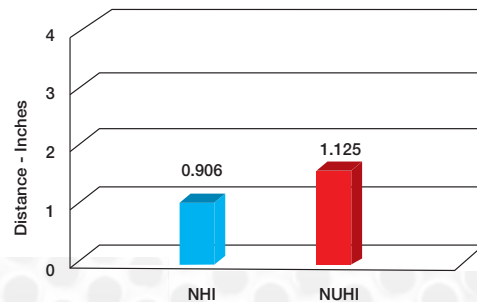
1/2" Diameter Ball at 1/4" Away



1/2" Diameter Ball on Surface



1/4" Diameter Ball, Reach-Out



# The NUHI™ Cartridge Magnet

Available In Food-Grade Magnetic Separation Equipment



## HF Series Drawer Magnet

- Two rows of magnets standard; available with additional rows for heavier product flow
- Heavy-duty 304 stainless steel construction with full seam, air-tight welds
- Easy access rear door for quick maintenance
- Available with inside dimensions of 8" x 8" to 24" x 24"
- Optional round or square spouting
- Manual and Pneumatic Continuous Self-Cleaning Models available
- Standard with FDA-Compliant Metal-Detectable Gaskets and Grommets



## Grate Magnets

- Place in hoppers, receiving pits, housings and bins for economical protection in mechanical or gravity flow applications
- Round, square and rectangular shape available
- Available in a variety of sizes
- Ruggedly constructed for indoor/outdoor use

*Grate magnet shown with optional sanitary finish*



500 S. Spencer Rd. • P.O. Box 468 • Newton, Kansas 67114 • USA  
Phone: 800-835-2526 or +1-316-284-2020  
Email: [bmc@buntingmagnetics.com](mailto:bmc@buntingmagnetics.com) • [www.buntingmagnetics.com](http://www.buntingmagnetics.com)