



Magnetic Liquid Traps

Cartridge-Style Liquid Traps are the right choice for use with nonfibrous fluids that do not clog or contain solids larger than 0.5" in diameter. For liquids that are fibrous or contain large solids, Plate-Style Liquid Traps should be used. Once you have chosen the style and model you need based on the products you handle, you need to address sizing and select options compatible with your application.

Match Your Line Size and Flow Rate

Bunting Magnetic Liquid Traps are engineered and sized to provide ample magnetic protection at typical pipe flow rates. Using the table below, find the liquid trap(s) that match both the line size of your new or existing pipe or tubing and your flow rate requirements.

Flow In Gallons Per Minute for Various Products*

Model No.	Thin Liquids 0-500CP	Light Creams 500-5,000CP	Heavy Pastes 5,000-50,000CP	Semi-Solid Fluids 50,000CP+
MLT-C/CSC-2"	125	95	60	30
MLT-C/CSC-3"	225	170	110	55
MLT-C/CSC-4"	310	230	150	75
MLT-SP-2"	50	40	25	15
MLT-SP-3"	90	65	45	25
MLT-DP-2"	100	75	50	25
MLT-DP-3"-4"	180	130	90	50

*Reduce the flow rates listed above by 50% for liquids that are crushed, fibrous, or contain suspended solids.

Magnets Matched to Your Operating Temperatures

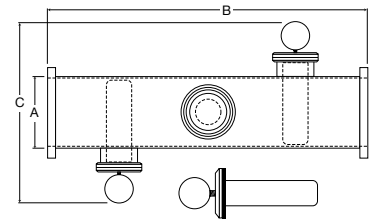
The standard magnet for Cartridge-Style MLT's is the Neodymium High-Intensity load. This magnet is intended for high-temperature processing or where clean-in-place (CIP) systems might expose traps to elevated temperatures. Our NHI heat-resistant load is standard. This Neodymium High-Intensity load is specially designed to operate in temperatures up to 290°F. Liquid Traps are available with an optional water jacket.

Plate-Style Liquid Traps come with N40SH magnets, which can handle temperature environments as high as 290°F.

In-line Liquid Trap

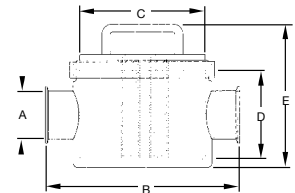
Model No.	A	B	C	Max. Press.
MLT-I-C-3	3 1/2"	12"	7"	200 psi
MLT-I-C-4	4 1/2"	12"	8"	200 psi

Specifications are subject to change without notice.



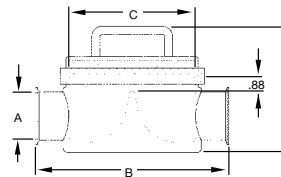
Cartridge Style

Model No.	A	B	C	D	E	F	Max. Press.	Net. Wt.
MLT-C-2	1" 1.5" 2"	9.5	5.19	4.5	7.25	8	250 psi	22 lbs.
MLT-C-3	2.5" 3"	12	7.81	5.5	8.5	10	200 psi	40 lbs.
MLT-C-4	3.5" 4"	12	7.81	7.5	10.5	10	200 psi	48 lbs.



Single Plate Magnet Style

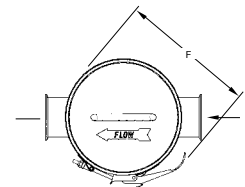
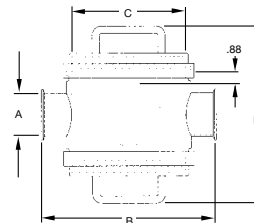
Model No.	A	B	C	E	F	Max. Press.	Net. Wt.
MLT-SP-2	1" 1.5" 2"	9.5	5.19	6.69	8	250 psi	18 lbs.
MLT-SP-3	2.5" 3"	12	7.81	8.12	10	200 psi	40 lbs.



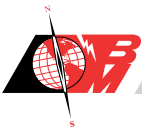
Note: Maximum pressure rating for 70°F. Each liquid trap is tested to 150% of rated pressure. MLT's are NOT ASME CODE certified. Before ordering, check local and state pressure vessel requirements.

Dual Plate Magnet Style

Model No.	A	B	C	E	F	Max. Press.	Net. Wt.
MLT-DP-2	1" 1.5" 2"	9.5	5.19	10.0	8	250 psi	24 lbs.
MLT-DP-3	2.5" 3"	12	7.81	12.5	10	200 psi	49 lbs.
MLT-DP-4	3.5" 4"	12	7.81	12.5	10	200 psi	49 lbs.



Specifications are subject to change without notice.

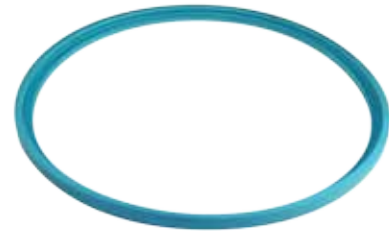


Metal-Detectable Gaskets

Only Offered by Bunting® • Standard on Food Grade Magnetic Separation Products • FDA Compliant.

- Dairy 3-A certified and FDA compliant
- Standard Cartridge-Style Liquid Traps and Plate-Style Liquid Traps feature Buna-N (nitrile) gasket material with EPDM and Viton® as options
- In-Line Cartridge-Style Liquid Traps come standard with Viton® gaskets

Contamination from chipped or cracked gaskets is minimized with the industry's only metal detectable gaskets from Bunting® Magnetics Co. Now, if a piece chips off or the gasket breaks, it is immediately caught by the cartridge or plate. The broken piece can also be seen in any metal detection or x-ray system.



Gaskets - Metal Detectable

Property	Buna-N	EPDM	*Viton®
Temperature range	-40 to 225°F	-55 to 275°F	-20 to 400°F
Acid resistance	good	good-excellent	good
Alkali resistance	fair-good	good-excellent	poor-good
Petroleum oil resistance	excellent	poor	excellent
Vegetable oil resistance	good	good	excellent

Liquid Trap Water Jackets

Available on all models upon request

Assembled onto existing housings, water Jackets are designed to provide a water space around the sides and the bottom of Bunting's Liquid Traps. (On dual plate units, jackets fit around sides only.) They are ideal for use in heated pipeline systems for products that solidify, such as chocolate or cheese.

Water Jacket Specifications

- Jackets are fabricated of 304 SS.
- Inlet and outlet heating water ports are 3/4" NPT female. The inlet is positioned lower than the outlet to allow incoming liquid to purge air from the cavity.
- Water Jacket assemblies are pressure tested to 150% of their 150 psi rated capacity.
- Optional bottom drain port is available with a 1/2" NPT tapped hole in the center of the bottom plate fitted with a plug.

