

# Grate Magnets



To select the correct grate size for hoppers and similar applications, measure the area of the discharge opening in inches and double it, so as not to restrict product flow.

Then choose a standard grate from the table that comes closest to the size you've calculated. Grates can often be laid in place without a fixed mounting.

To order Heavy-Duty Grates, use the same formula. Heavy-Duty Grates are not available with baffles; nor are Alnico magnets a standard option for these grates. Call for more information about special applications and construction standards.

Ordering Information	Part Number Explanation			
<p>Part numbers for grates describe physical features. The numbers have four parts. The first two letters indicate separator type and shape. The second part consists of digits that give dimensions in inches. Rectangular grates have both width and length specified. The third and fourth parts do not appear in the table. They specify Heavy-Duty Grates, baffles, and magnetic material.</p> <p>*NPB - check with inside sales to see if still available                      **Not Available on Heavy Duty Grate Magnets</p>	<p><b>GS</b> Type/Shape</p> <p><b>GR</b> = Round Grate  <b>GS</b> = Square or Rectangular Grate</p>	<p><b>12 18</b> Size</p> <p><b>4</b> = Round Grate with 4" diameter or Square Grate with 4" sides  <b>12 18</b> = Rectangular Grate 12" wide with cartridges 18" long</p>	<p><b>A</b> Options</p> <p><b>H</b> = Heavy-Duty Grates  <b>P</b> = Plain Style, no baffles  <b>A</b> = Angular Baffles  <b>R</b> = Rod Baffles</p>	<p><b>CR</b> Magnetic Material</p> <p><b>CR</b> = Ceramic**  <b>AL</b> = Alnico (not available in Heavy-Duty Grate Magnets)  <b>NE</b> = Rare Earth for HD Cartridges  <b>*NPB (NTC)</b> = Neodymium Power-Balanced™ Rare Earth material  <b>NHI</b> = Neodymium High-Intensity Rare Earth material for the most demanding applications (not available in Heavy-Duty Grate Magnets)  <b>NHIT</b> = Neodymium High-Intensity Rare Earth material for high temperature use  <b>NUHI</b> = Neodymium Ultra High Intensity **</p>

## Standard Round, Square, and Rectangular Grates

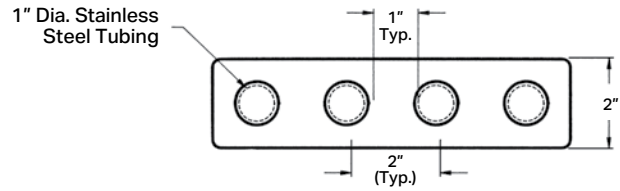
		Length of Cartridge																
		4	6	8	10	12	14	16	18	20	22	24	26	28	30	32	34	36
Width of Grate	4	GS-4 GR-4	GS-4 6	GS-4 8	GS-4 10	GS-4 12	GS-4 14	GS-4 16	GS-4 18	GS-4 20	GS-4 22	GS-4 24	GS-4 26	GS-4 28	GS-4 30	GS-4 32	GS-4 34	GS-4 36
	6	GS-6 4	GS-6 GR-6	GS-6 8	GS-6 10	GS-6 12	GS-6 14	GS-6 16	GS-6 18	GS-6 20	GS-6 22	GS-6 24	GS-6 26	GS-6 28	GS-6 30	GS-6 32	GS-6 34	GS-6 36
	8	GS-8 4	GS-8 6	GS-8 GR-8	GS-8 10	GS-8 12	GS-8 14	GS-8 16	GS-8 18	GS-8 20	GS-8 22	GS-8 24	GS-8 26	GS-8 28	GS-8 30	GS-8 32	GS-8 34	GS-8 36
	10	GS-10 4	GS-10 6	GS-10 8	GS-10 GR-10	GS-10 12	GS-10 14	GS-10 16	GS-10 18	GS-10 20	GS-10 22	GS-10 24	GS-10 26	GS-10 28	GS-10 30	GS-10 32	GS-10 34	GS-10 36
	12	GS-12 4	GS-12 6	GS-12 8	GS-12 10	GS-12 GR-12	GS-12 14	GS-12 16	GS-12 18	GS-12 20	GS-12 22	GS-12 24	GS-12 26	GS-12 28	GS-12 30	GS-12 32	GS-12 34	GS-12 36
	14	GS-14 4	GS-14 6	GS-14 8	GS-14 10	GS-14 12	GS-14 GR-14	GS-14 16	GS-14 18	GS-14 20	GS-14 22	GS-14 24	GS-14 26	GS-14 28	GS-14 30	GS-14 32	GS-14 34	GS-14 36
	16	GS-16 4	GS-16 6	GS-16 8	GS-16 10	GS-16 12	GS-16 14	GS-16 GR-16	GS-16 18	GS-16 20	GS-16 22	GS-16 24	GS-16 26	GS-16 28	GS-16 30	GS-16 32	GS-16 34	GS-16 36
	18	GS-18 4	GS-18 6	GS-18 8	GS-18 10	GS-18 12	GS-18 14	GS-18 16	GS-18 GR-18	GS-18 20	GS-18 22	GS-18 24	GS-18 26	GS-18 28	GS-18 30	GS-18 32	GS-18 34	GS-18 36
	20	GS-20 4	GS-20 6	GS-20 8	GS-20 10	GS-20 12	GS-20 14	GS-20 16	GS-20 18	GS-20 GR-20	GS-20 22	GS-20 24	GS-20 26	GS-20 28	GS-20 30	GS-20 32	GS-20 34	GS-20 36
	22	GS-22 4	GS-22 6	GS-22 8	GS-22 10	GS-22 12	GS-22 14	GS-22 16	GS-22 18	GS-22 20	GS-22 GR-22	GS-22 24	GS-22 26	GS-22 28	GS-22 30	GS-22 32	GS-22 34	GS-22 36
	24	GS-24 4	GS-24 6	GS-24 8	GS-24 10	GS-24 12	GS-24 14	GS-24 16	GS-24 18	GS-24 20	GS-24 22	GS-24 GR-24	GS-24 26	GS-24 28	GS-24 30	GS-24 32	GS-24 34	GS-24 36
	26	GS-26 4	GS-26 6	GS-26 8	GS-26 10	GS-26 12	GS-26 14	GS-26 16	GS-26 18	GS-26 20	GS-26 22	GS-26 24	GS-26 GR-26	GS-26 28	GS-26 30	GS-26 32	GS-26 34	GS-26 36
	28	GS-28 4	GS-28 6	GS-28 8	GS-28 10	GS-28 12	GS-28 14	GS-28 16	GS-28 18	GS-28 20	GS-28 22	GS-28 24	GS-28 26	GS-28 GR-28	GS-28 30	GS-28 32	GS-28 34	GS-28 36
	30	GS-30 4	GS-30 6	GS-30 8	GS-30 10	GS-30 12	GS-30 14	GS-30 16	GS-30 18	GS-30 20	GS-30 22	GS-30 24	GS-30 26	GS-30 28	GS-30 GR-30	GS-30 32	GS-30 34	GS-30 36
	32	GS-32 4	GS-32 6	GS-32 8	GS-32 10	GS-32 12	GS-32 14	GS-32 16	GS-32 18	GS-32 20	GS-32 22	GS-32 24	GS-32 26	GS-32 28	GS-32 30	GS-32 GR-32	GS-32 34	GS-32 36
	34	GS-34 4	GS-34 6	GS-34 8	GS-34 10	GS-34 12	GS-34 14	GS-34 16	GS-34 18	GS-34 20	GS-34 22	GS-34 24	GS-34 26	GS-34 28	GS-34 30	GS-34 32	GS-34 GR-34	GS-34 36
36	GS-36 4	GS-36 6	GS-36 8	GS-36 10	GS-36 12	GS-36 14	GS-36 16	GS-36 18	GS-36 20	GS-36 22	GS-36 24	GS-36 26	GS-36 28	GS-36 30	GS-36 32	GS-36 34	GS-36 GR-36	

All dimensions are in inches. Specifications are subject to change without notice.

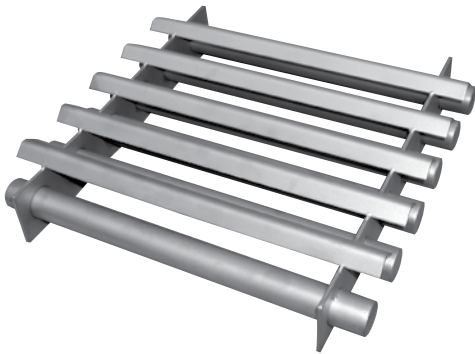
# Grate Magnets



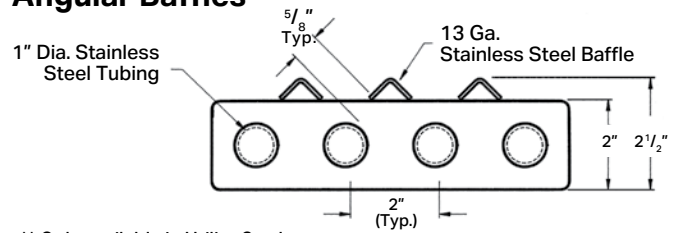
## Plain Style\* -



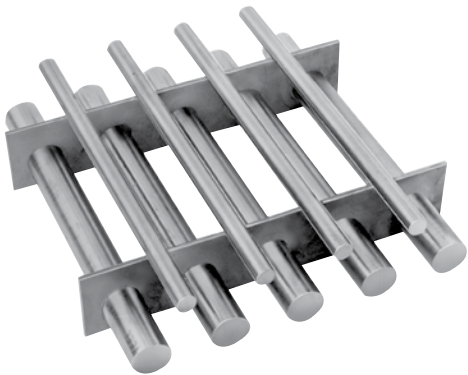
\*Available with cartridges that are screwed on to avoid pockets forming



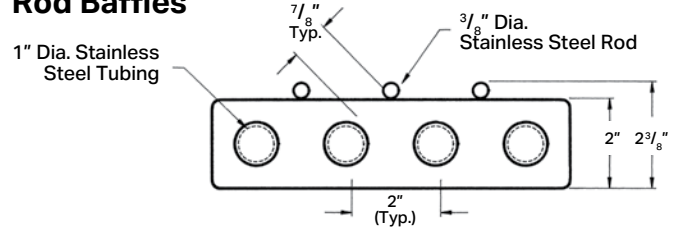
## Angular Baffles \*\*



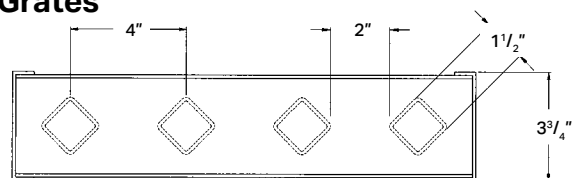
\*\* Only available in Utility Grade



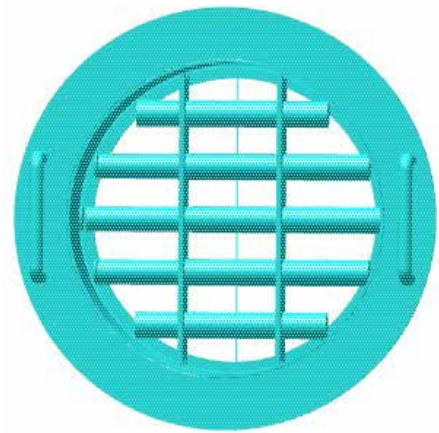
## Rod Baffles



## Heavy-Duty Grates



# Drum Grate Magnets



Permanent type Bunting Drum Grate Magnets are designed for removal of tramp from plastics, chemicals, pharmaceuticals, etc., being packaged in drums and barrels.

These portable magnets are quickly installed by placing the collar flange on top of the barrel or drum. The tubes are 1" in diameter and are on 2" centers. The frame, flange and handles are stainless steel. Bunting Drum Grates are available in standard sizes from 8" to 15" diameters.

