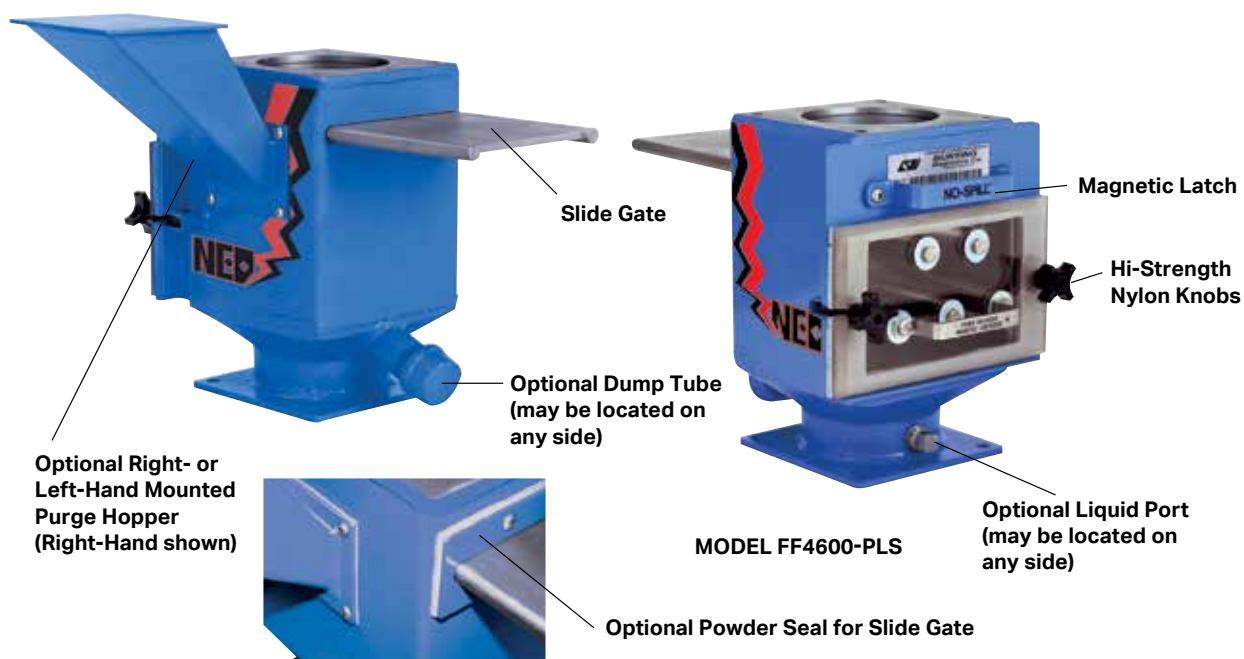


FF Series Drawer Magnet



Drawer Magnet Options

Patented No-Spill™ Slide Gate

The patented No-Spill Slide Gate completely and positively shuts off product flow, so you don't have to worry about product spillage creating a mess or safety hazard when you remove the drawer for cleaning.

Purge Hopper

Our Purge Hopper speeds clean-out of your equipment when changing color or compound – without sacrificing magnetic protection or taking the time to empty your hopper.

Dump Tube

This option lets you empty the drawer housing and material hopper of plastic after a run has been completed.

Liquid Port

The Liquid Port allows you to inject liquid color additive into the resin. The port can also be used to hold a temperature probe.

Powder Seal Kit

This option prevents powder materials from leaking out around the Slide Gate – which is especially important in applications involving PVC or similar powder materials. The kit provides a compression seal around the Slide Gate. Order as original equipment or retrofit on site.

"NEO" Magnets - Standard

Equipped with powerful Rare Earth magnets available. Featuring the only temperature-compensated, Rare Earth magnets for injection molding machines.

Stainless Steel Housing

Built with a welded stainless steel housing for easy cleaning and durability.

EPDM Gasket

Featuring a new EPDM gasket that resists heat aging and compression set.

Hi-Strength Nylon Knobs

Fitted with high-torque nylon knobs that resist breakage.

Clear Polycarbonate Drawer Front

Designed with a clear drawer front for easy viewing of product flow and captured contaminants.

Magnetic Latch

Exclusive magnetic latch locks the No-Spill Slide Gate open during operation, yet permits easy closing for purging and color changes.

Model number builder for standard units with additional options

FF6	-	NTC	-	SL	-	H	-	P	-	SS	-	D	-	L	-	MSC
Type and size FF[size] FFL[size]		Magnetic Strength NTC NHI NHIT CER		Includes a slidegate		Includes purge hopper		Includes powder seal kit		Stainless steel		Includes dump tube		Includes liquid port		MSC PSC manual (leave blank)

Examples

FFL4-NHI-SL-L

4" low profile FF with NHI mag load with slidegate and liquid port

FF10-NTC-H-SS-D

10" FF, NTC load with hopper, stainless steel construction and a dump tube

FF10-NTC-H-SS-D

10" FF, NTC load with hopper, stainless steel construction and a dump tube

FF Series Drawer Magnet

Drawer Magnet Selection Guide for Standard and Self-Cleaning FF Series

(Dimensions are in inches and keyed to drawings)



MODEL FF4
4x4



MODEL FF6
6x6



MODEL FF8
8x8



MODEL FF10
10x10

To select the right FF drawer follow the plan outline to select the right model number.

First select the size you will need from either 4X4, 6X6, 8X8, 10X10. Add one number to model once the size has been determined such as FF6. If you need the FF to be a low profile add an L (ex FFL).

FF6						
-----	--	--	--	--	--	--

Next pick the strength of the magnetic you want.

NTC-NEO Temperature Compensated

NHI-NEO High Intensity

NHIT-NEO High Temperature

CER- Ceramic

FF6	NHI					
-----	-----	--	--	--	--	--

Look on the previous page to see if there is any additional components you wish to have on your FF drawer.

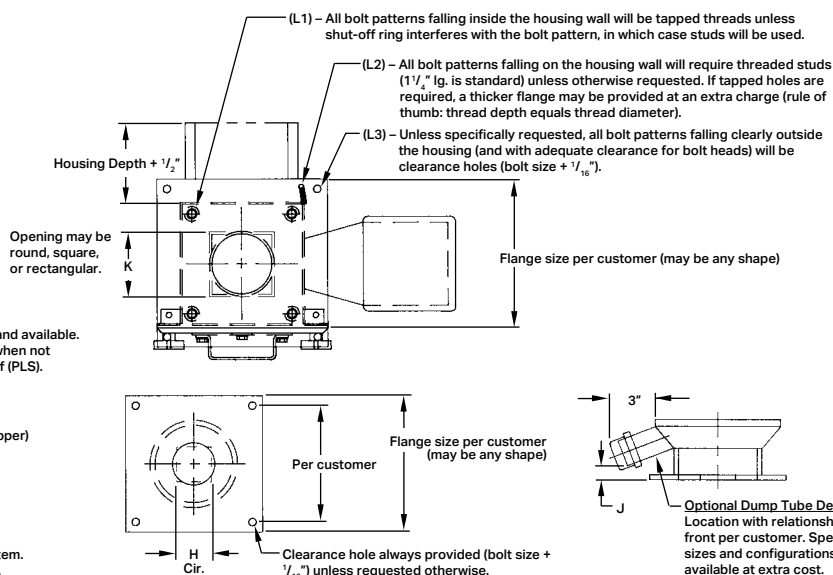
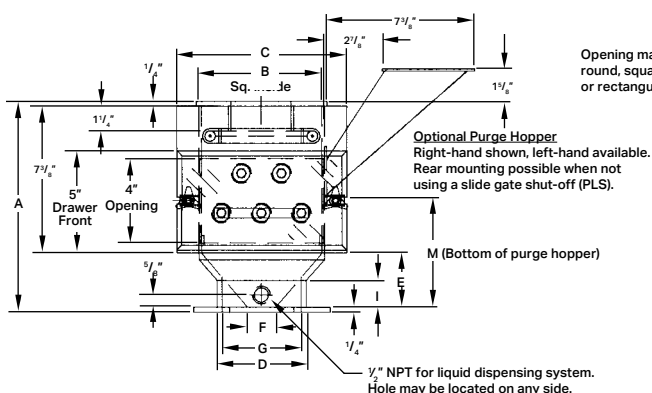
Using the table at the bottom of the page add them to the model number in the order you wish. If there is an option that does not have an abbreviation write it in the description after the rest of the model number.

FF6	NHI	SL	H	SS	High Strength Nylon Knobs
-----	-----	----	---	----	---------------------------

Now you have your FF drawer model number. Remember when ordering to mention what size holes you wish to have on the flanges. Any design can be done as long as a design or size has been sent in. If you wish for 3 inch centers, gussets, extended tubes, or etc, make a note when placing your order.

Model	FF4	FF6	FF8	FF10*
A	10 ¹ / ₂	10 ³ / ₈	10 ⁷ / ₈	Varies
B	4 X 4	6 X 6	8 X 8	10 X 10
C	6 ¹ / ₂	8 ¹ / ₂	10 ¹ / ₂	12 ¹ / ₂
D	2 ³ / ₈	4 ³ / ₈	6 ³ / ₈	Varies
E	2 ³ / ₈	2 ³ / ₄	3	Varies
F ^{Min. Rnd. Opg.}	7 ¹ / ₈	1 ³ / ₄	3 ¹ / ₈	Varies
G ^{Max. Rnd. Opg.}	2 ¹ / ₄	4	6	Varies
H ^{Max. Sq. Opg.}	1 ¹ / ₂	2 ³ / ₄	4	Varies
I	1 ¹¹ / ₃₂	1 ³ / ₁₆	1 ¹¹ / ₃₂	Varies
J	3 ¹ / ₈	7 ¹ / ₁₆	3 ¹ / ₄	Varies
K ^{Max. Opg.}	3 ¹ / ₄	5 ¹ / ₄	6 ³ / ₄	8 ³ / ₄
L1 L2 L3	Per Customer Specifications			
M	6 ³ / ₈	6 ¹ / ₂	6 ³ / ₄	Varies

* Model FF4100PL/PLS is available with welded transition only (no casting).



Easy Installation

Each of the four standard FF Series units is available with the original No-Spill™ Slide Gate – Bunting designed and patented – to provide safer and more convenient cleaning. All models are also available with self-cleaning drawer modules. Flanges are pre-drilled to OEM or customer specifications. Be sure to request the options, flange specifications, and hole locations you want when ordering.

Our new NEO Drawer Magnets are outfitted with super-strong Neodymium Rare Earth magnets that capture and hold ferrous metal particles so small that you may not be able to see them with the naked eye. Unlike competing Rare Earth drawer magnets that can permanently lose their magnetic fields at temperatures above 300° F, Bunting's exclusive design is the only temperature-compensated Rare Earth drawer magnet made for injection molding machines. It is guaranteed not to lose its permanent magnetic strength when bolted to feed throats operating at temperatures in excess of 300° F. That means less downtime for you with reduced screw wear and fewer plugged nozzles.

FF Series Drawer Magnet - High Temperature

(Rated for temperatures up to 350° F)



Select Features

- Magnets: High temperature-compensated rare earth magnets; Superior cartridge geometry and construction increases reach-out and holding power while maximizing cartridge life
- Drawer Gasket: Viton sponge material rated to 400°F maximum temperature to resist heat aging and compression set
- Drawer Front: Polysulfone material resists temperatures up to 350°F intermittent temperature operation
- High-Torque Nylon Knobs: Resists breakage at temperatures up to 350°F
- Housing: Rugged easy-to-clean 11-gauge stainless steel housing built to support symmetrical 10,000 lb. compression loads
- Stainless steel center drawer guide makes removal and re-installation of the magnet drawer for cleaning quick and easy
- High-Temperature components are completely interchangeable with the standard FF Drawer Magnet

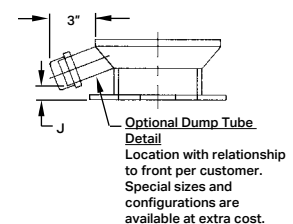
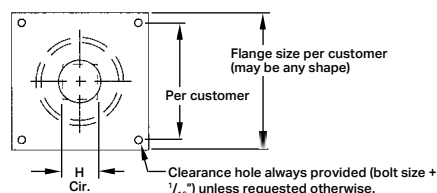
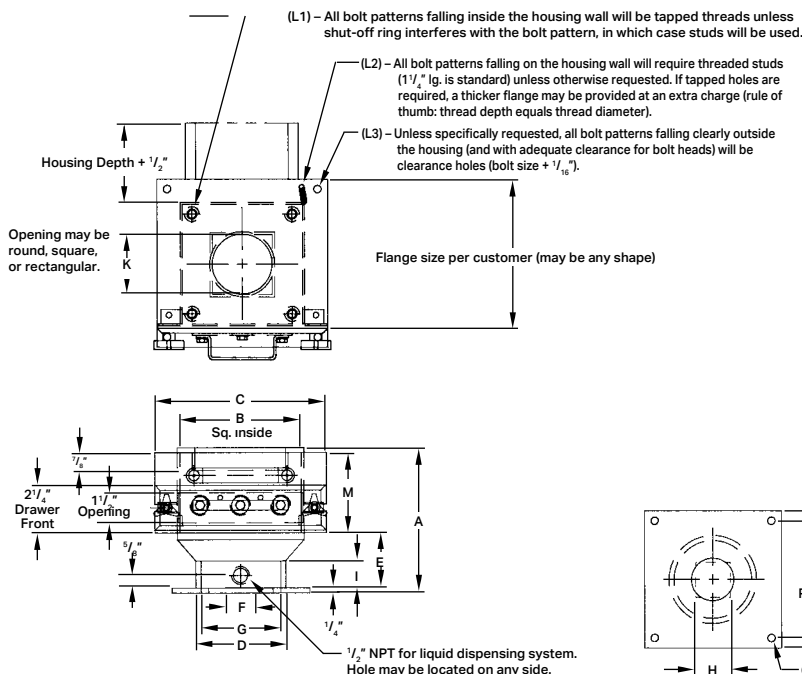
Low-Profile FF Series Drawer Magnet (FFL)



When headroom is critical, you need Bunting's Low-Profile Drawer Magnet. Get Bunting's proven design in a space-saving 5 ¹⁵/₁₆" overall height, without slide-gate. Standard features include a single row of our exclusive Permanent Magnetic Cartridges, clear polycarbonate drawer front, and rigid 10-gauge mild steel construction. You can even purchase these units with our original No-Spill™ Slide Gate option. Stainless steel construction and Rare Earth Magnetic Cartridges are also available. We'll pre-drill the unit's rugged ¹/₄" thick flanges to your specifications at no extra charge.

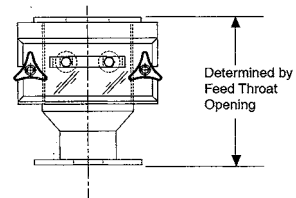
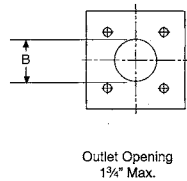
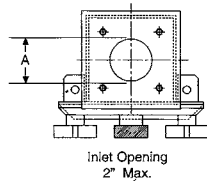
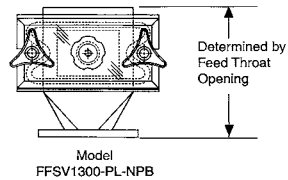
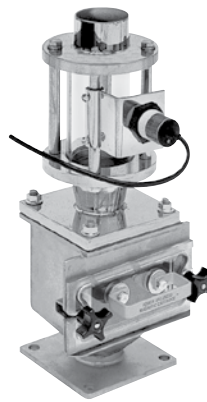
Low-Profile Drawer Magnet Selection Guide

Model	LP1600PL	LP1600PLS	LP1800PL	LP1800PLS
A	5 ¹¹ / ₁₆	7 ¹ / ₄	5 ¹⁵ / ₁₆	7 ¹ / ₂
B	6 X 6	6 X 6	8 X 8	8 X 8
C	8 ¹ / ₂	8 ¹ / ₂	10 ¹ / ₂	10 ¹ / ₂
D	4 ³ / ₈	4 ³ / ₈	6 ³ / ₈	6 ³ / ₈
E	2 ³ / ₄	2 ³ / ₄	3	3
F Min. Round Opening	1 ³ / ₄	1 ³ / ₄	3 ¹ / ₈	3 ¹ / ₈
G Max. Bottom Opening	3 ⁷ / ₈	3 ⁷ / ₈	6	6
H Max. Square Opening	2 ³ / ₄	2 ³ / ₄	4 ¹ / ₄	4 ¹ / ₄
I	1 ⁵ / ₁₆	1 ⁵ / ₁₆	1 ¹¹ / ₃₂	1 ¹¹ / ₃₂
J	7 ¹ / ₁₆	7 ¹ / ₁₆	3 ³ / ₄	3 ³ / ₄
K Max. Top Opening	5	5	6 ³ / ₄	6 ³ / ₄
L1 L2 L3	Per Customer Specifications			
M	2 ⁷ / ₁₆	4	2 ⁷ / ₁₆	4

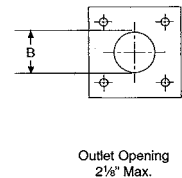
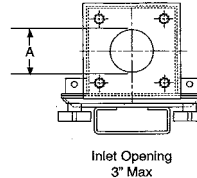


FFV Drawer Magnet

Our FFV Series Drawer Magnets are specifically designed for small volume, closed-loop "Just-In-Time" systems.



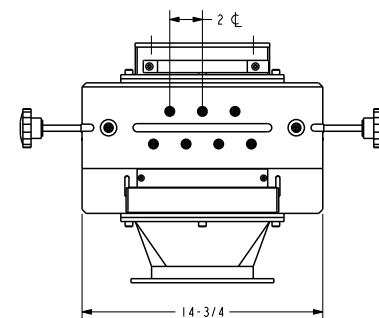
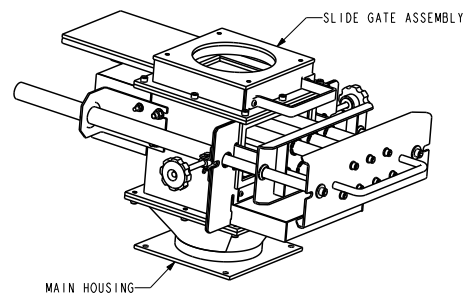
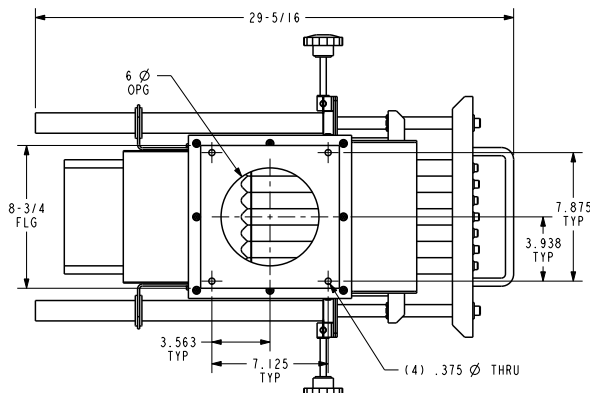
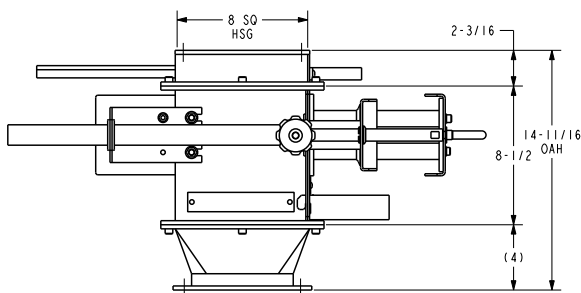
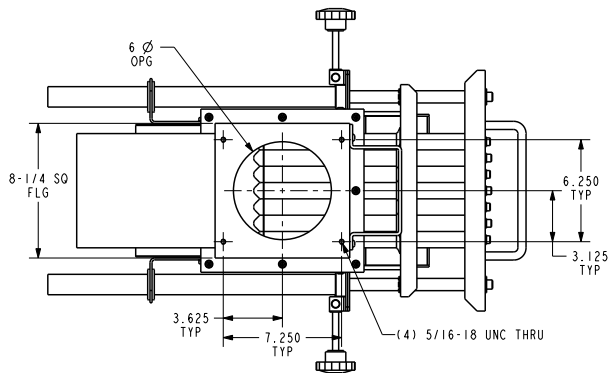
Model
FFV1400-PL-CR
FFSV1400-PL-CR
FFSV1400-PL-NPB



Dimensions A and B per Customer Specs.

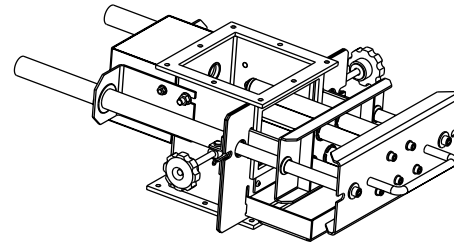
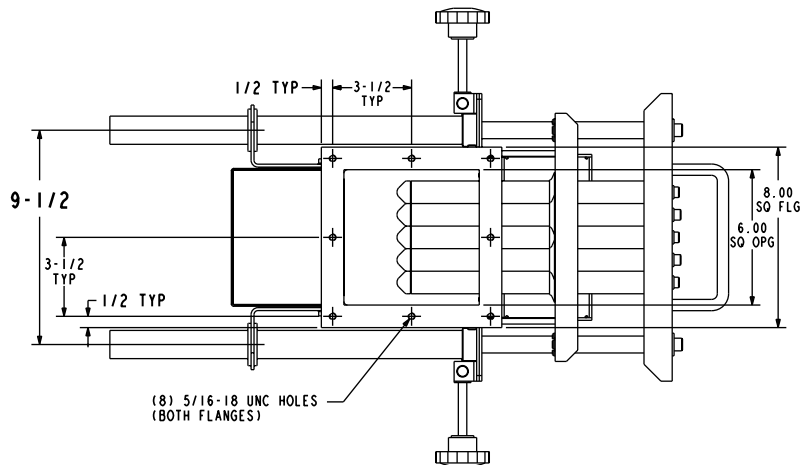
Manual Self-Cleaning FF Drawer Magnet

Available in 6", 8" and 12" models

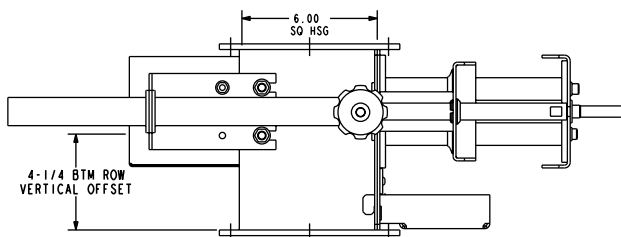


Manual Self-Cleaning FF Drawer Magnet

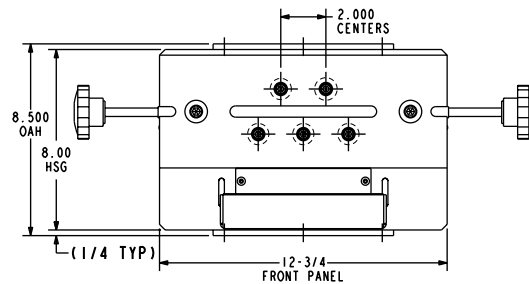
6" model - available with optional slide-gate



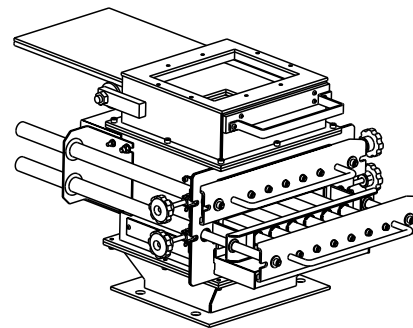
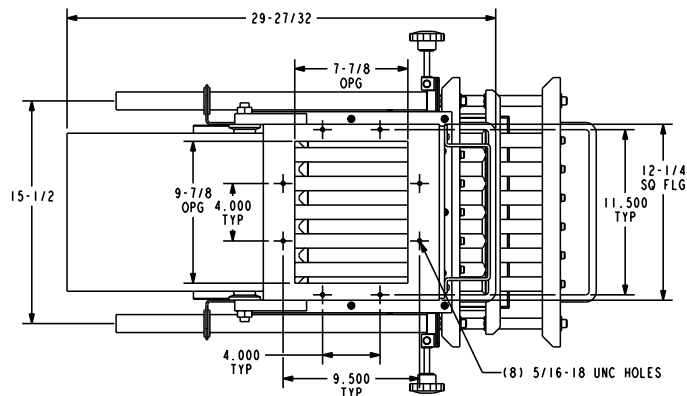
SCALE 0.250



NOTE: Bottom flanges are identical. Top flanges can be modified.



12" model - available with optional slide-gate



SCALE 0.156

